



SHOW PROGRAM 2016

prolight+sound / **musikmesse**

event technology solutions

SOUND TECHNOLOGY
LIGHT TECHNOLOGY
STAGE EQUIPMENT
FLIGHTCASE **HARDWARE**

TABLE OF CONTENTS:

Words from the Management	4
Brand Portfolio	5
Product Demos & Live Acts	6
Recent Milestones & Upcoming Events	7
Product Highlights	8 - 25
Prize Drawing	26 - 27
Booth Map	28 - 29
Gravity at Musikmesse	30 - 31

Dear valued customers and new friends,

It takes just one-tenth of a second to make a great first impression and only a blink of an eye to judge another's trustworthiness. With more than 40 years of experience and over 190 highly-qualified, passionate professionals working around the globe, Adam Hall Group is dedicated to bringing you innovative and user-friendly event technology solutions you can appreciate, enjoy and rely on.

As a leading German manufacturing and sales distribution company, we are dedicated to fostering prosperous relationships with our business customers and partners. Through these close relationships and effective listening, we have the distinct advantage of directing customer and end-user feedback immediately back into our product development cycles to keep moving innovation forward.

Whether you are a music instrument retailer, live event & rental company, broadcast studio, system integrator, installer, public or private enterprise, or an industrial flightcase manufacturer, we are excited to show you the latest in event technology, award-winning innovation, top quality brands, and our superior commitment to service and satisfaction at this year's Prolight + Sound 2016.

Experience event technology – and enjoy the show!

Alexander Pietschmann

Markus Jahnel

David Kirby

brand portfolio

ADAM HALL BRANDS:



DEFENDER®



cables stands hardware accessories

DISTRIBUTION BRANDS:



daily live demos



Tuesday – Friday

**LD Systems
Maui® 5 Presentation**
with Olli Roth
11 am / 1 pm / 3 pm / 5 pm



Tuesday – Thursday

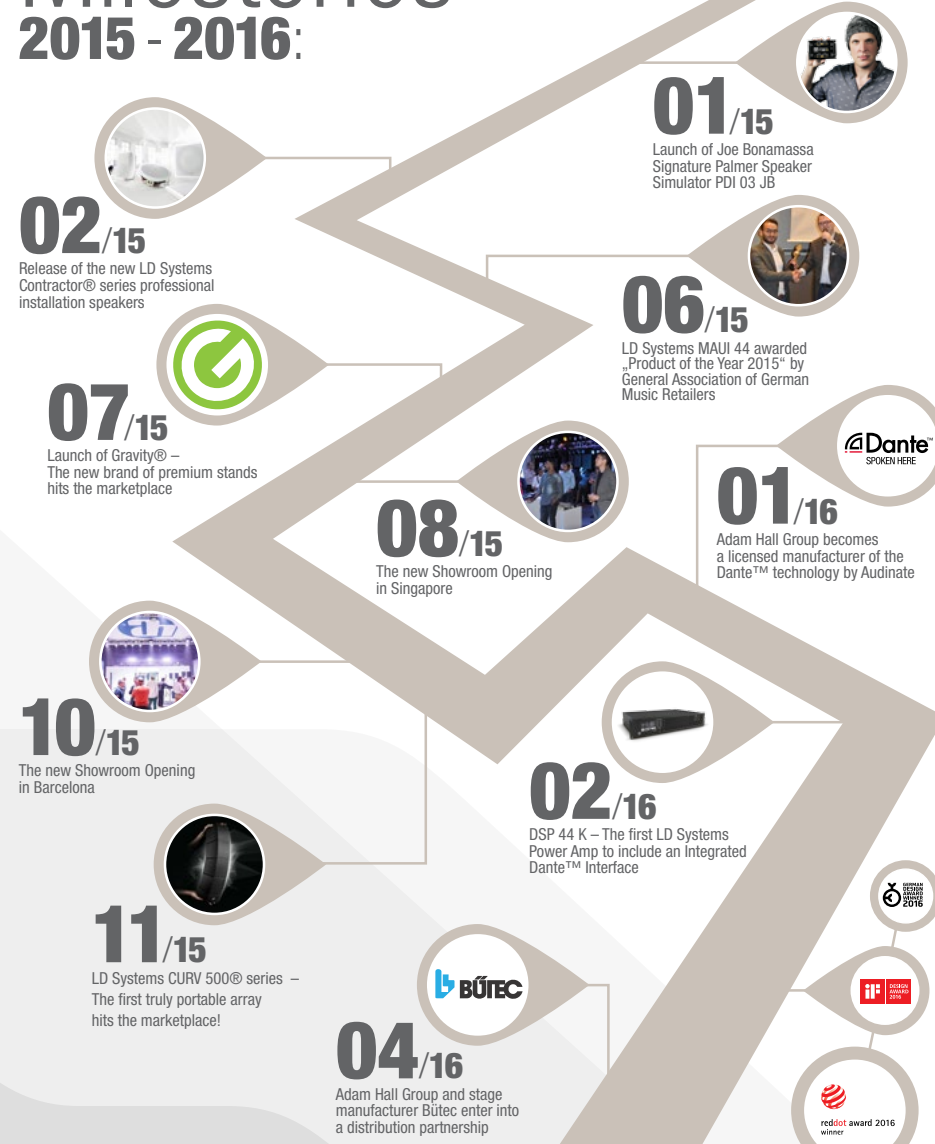
**LD Systems
CURV 500® Presentation**
with Tarq Bowen & Band
12 pm / 2 pm / 4 pm / 6 pm



Friday

**LD Systems
CURV 500® Presentation**
with Stray Mood
12 pm / 2 pm / 4 pm / 6 pm

Milestones 2015 - 2016:



Upcoming Events in 2016

- 10 May 2016 - PLASA FOCUS Leeds - London
- 10 May 2016 - LLB - Stockholm
- 30 Sep 2016 - Music Expo – Budapest
- 31 Oct 2016 - Prolight + Sound Middle East - Dubai
- 02 Nov 2016 - Monitor Expo – Bella Center - Copenhagen

available Q3 2016

MAUI® 11 G2

ACTIVE COMPACT COLUMN
PA SYSTEM

- ✓ Compact powered line array column system
- ✓ 1,400 watts of Class D peak power
- ✓ BEM (Boundary Element Method) optimized CD Horn
- ✓ Built-in mixer with mic, hi-Z and stereo line channels
- ✓ Bluetooth audio streaming
- ✓ All-in-one sound reinforcement and monitor system
- ✓ Custom multi-pin connectors for plug-and-play convenience
- ✓ Auto-adaptive 24-bit digital signal processing
- ✓ Optional adapter cable for separate sub and column placement
- ✓ Easily portable



available Q3 2016

MAUI® 28 G2

ACTIVE COMPACT COLUMN
PA SYSTEM

- ✓ Compact powered line array column system
- ✓ 2,600 watts peak power
- ✓ BEM (Boundary Element Method) optimized CD Horn
- ✓ 3-way Class D amplification
- ✓ Built-in mixer with mic, hi-Z and stereo line channels
- ✓ Bluetooth audio streaming
- ✓ All-in-one sound reinforcement and monitor system
- ✓ Custom multi-pin connectors for plug-and-play convenience
- ✓ Auto-adaptive 24-bit digital signal processing
- ✓ Optional adapter cable for separate sub and column placement
- ✓ Easily portable





available Q3 2016



CURV 500[®] IAMP 4-CHANNEL DSP CONTROLLED **AMPLIFIER**

- ✓ Class D power amplifier with DSP control
- ✓ Purpose-designed for CURV 500 installations
- ✓ 4 x 500 watts into 2 ohms
- ✓ Single push encoder operation
- ✓ Balanced XLR and Phoenix input connectors
- ✓ Speakon-compatible and Phoenix output connectors
- ✓ Soft start and DC, overcurrent, short circuit and thermal protection
- ✓ Temperature controlled low-noise fan
- ✓ High efficiency switch mode power supply



available Q3 2016



CURV 500[®] ISUB 10" INSTALLATION **SUBWOOFER**

- ✓ 10" vented subwoofer for CURV 500 installations
- ✓ 300 watts RMS power handling
- ✓ 47 – 150 Hz frequency response
- ✓ Speakon-compatible and Phoenix inputs
- ✓ Includes low-profile mounting bracket
- ✓ Available in black or white finish



available Q2 2016



DSP 44 K

DANTE™ ENABLED 4,800 W
4-CHANNEL POWER AMPLIFIER



- ✓ Dante™ enabled 4-channel power amplifier
- ✓ 4 x 1,200 W @ 4 and 2 ohms, 2 x 2,400 W bridged @ 8 and 4 ohms, 4 x 1,200 W @ 70w V
- ✓ Power factor correction (PFC)
- ✓ 4-channel 24-bit 96/48kHz DSP
- ✓ DSP functions: FIR and IIR filters, parametric EQ, crossover, I/O delay, RMS and peak limiters
- ✓ Dynamic range: 118dB
- ✓ Temperature-controlled dual fan cooling
- ✓ Thermal protection, current protection, DC protection, clip limiter
- ✓ menu-driven 4-line display
- ✓ Ethernet and USB ports
- ✓ Computer control software
- ✓ LD Systems loudspeaker preset library available
- ✓ Dimensions (W x H x D): 483 x 89 x 320 mm (2U 19")



available Q2 2016

U500® SERIES

UHF **WIRELESS MICROPHONE SYSTEM**

- ✓ UHF wireless microphone series
- ✓ License free operation in the duplex gap
- ✓ Automatic channel scan to avoid interference issues
- ✓ Easy one touch frequency syncing over infrared
- ✓ Pilot tone squelch to prevent unwanted noise
- ✓ Switchable transmission power (2, 10 or 30 mW)
- ✓ Handheld and bodypack with convenient gain control
- ✓ Shockmount dynamic and condenser microphone capsules
- ✓ Rugged enclosures with high contrast OLED display
- ✓ Up to 5 systems can be used simultaneously
- ✓ Designed and engineered in Germany



available **now**

ZENIT® Z 120

PROFESSIONAL ZOOM PAR LIGHT WITH IP65

- ✓ Professional high output PAR with 7° – 55° zoom
- ✓ RDM enabled
- ✓ 120 W RGBW COB LED
- ✓ 16-bit technology for uniform HD colours & perfect dimming behavior
- ✓ Colour temperature correction
- ✓ 4 selectable HD dimming curves with adjustable response
- ✓ Variable white balance
- ✓ Flicker free, ideal for TV and film applications
- ✓ IP65 rating for outdoor use
- ✓ 7 modes of DMX control plus master, slave and standalone operation
- ✓ Neutrik powerCON TRUE1 and 5-pin X-HD connectors



available Q2 **2016**

available Q2 **2016**

AURO® BAR 100

LED MOVING BAR

- ✓ LED Moving Bar with infinite pan and tilt
- ✓ Two high-speed 3-phase motors
- ✓ 16-bit resolution and 3,600 Hz refresh rate
- ✓ 7 powerful 15 watt quad LEDs
- ✓ Rich RGBW colors, subtle pastel shades, 3 natural whites
- ✓ 4 DMX modes, RDM capability and ArtNET compatible
- ✓ Ethernet switch with FDT bridging (failsafe data transfer)
- ✓ Automatic positioning and color temperature correction
- ✓ Single pixel control
- ✓ 20 Hz strobe and 4 dimming curves
- ✓ 3- and 5-pin DMX, Neutrik powerCON and RJ45 connectors
- ✓ Battery powered 6-button display for offline setting

AURO® MATRIX 500

5 x 5 LED MOVING MATRIX

- ✓ LED Moving Matrix with infinite pan and tilt
- ✓ Two high-speed 3-phase motors
- ✓ 16-bit resolution and 3,600 Hz refresh rate
- ✓ 5 x 5 powerful 15 watt quad LED array
- ✓ Rich RGBW colors, subtle pastel shades, 3 natural whites
- ✓ 4 DMX modes, RDM capability and ArtNET compatible
- ✓ Ethernet switch with FDT bridging (failsafe data transfer)
- ✓ Automatic positioning and color temperature correction
- ✓ Single pixel control
- ✓ 20 Hz strobe and 4 dimming curves
- ✓ 3- and 5-pin DMX, Neutrik powerCON and RJ45 Ethernet connectors
- ✓ Silent-operation temperature controlled fan



available now



available Q2 2016

AURO® SPOT 100/200 LED MOVING HEADS

- ✓ RDM enabled moving head
- ✓ 90,000 lx @ 1 m (AURO SPOT 100)
- ✓ 130,000 lx @ 1 m (AURO SPOT 200)
- ✓ High speed 3-phase motors
- ✓ 16-bit resolution
- ✓ Motor Focus
- ✓ Automated positioning correction
- ✓ Battery powered display for offline operation
- ✓ 8 intense colours, white and split colours
- ✓ 6 gobos + open
- ✓ All gobos replaceable with metal or glass gobos
- ✓ Rotating 3-facet prism
- ✓ Smooth dimming from 100 - 0% with 4 selectable curves
- ✓ 0 - 20 Hz strobe
- ✓ Temperature controlled low noise fan
- ✓ Professional connectivity with 3 and 5-pin DMX and Neutrik powerCON I/O

AURO® SPOT 400 LED MOVING HEAD

- ✓ RDM enabled moving head with high-powered single LED
- ✓ 200,000 lx @ 1 m – 4470 lm
- ✓ High-speed 3-phase motors
- ✓ Motor focus, Pan and Tilt with 16-bit resolution
- ✓ Automatic positioning correction
- ✓ 2 color wheels, 12 colors, split colors, warm and cold white plus open
- ✓ 2 gobo wheels, 7 rotating, 9 fixed gobos plus open
- ✓ Frost filter
- ✓ Rotating 3, 5 and 8-facet prisms
- ✓ 0 - 20 Hz strobe
- ✓ Smooth dimming from 100 - 0% with 4 selectable curves
- ✓ Temperature controlled low-noise fan
- ✓ 3 and 5-pin DMX and Neutrik powerCON inputs and outputs
- ✓ Battery powered 6-button display for offline configuration



available now



available Q2 2016

AURO® BEAM 150 7 X 15 W RGBW LED UNLIMITED MOVING HEAD

- ✓ 7 high power 15 W Quad LEDs
- ✓ RGBW spectrum for saturated primary colours, subtle pastel shades and natural shades of white
- ✓ Single Pixel Control for effective Pixel Mapping effects
- ✓ 2 high-speed engines for precise, high-speed and unlimited Pan and Tilt movements
- ✓ Effective automated operating modes
- ✓ Programmable Standalone scenes
- ✓ Professional 3- and 5-pin DMX sockets and Neutrik powerCON mains connector
- ✓ With a 3,600 Hz refresh rate, it is ideal for TV and video applications
- ✓ RDM enabled
- ✓ 4 selectable dimming curves
- ✓ Color temperature correction
- ✓ 3 temperatures of white: warm white, white, cool white

PIXBAR 600 PRO IP65 RDM ENABLED LED OUTDOOR WASH LIGHT

- ✓ 12 ultra bright 12W RGBWA+UV LEDs
- ✓ IP65 rating for outdoor use
- ✓ Super silent and flicker free operation
- ✓ 7 DMX modes plus standalone, master or slave operation
- ✓ RDM enabled
- ✓ Ultra flexible color mixing with rich solid, warm pastel and UV colors
- ✓ Color macros calibrated to LEE filters standard
- ✓ Single pixel control for amazing chase effects
- ✓ Color temperature correction
- ✓ 3 temperatures of white
- ✓ 4 dimming curves
- ✓ Neutrik powerCON TRUE1 and 5-pin X-HD series connectors
- ✓ Security lock against unauthorized menu access
- ✓ Rugged die-cast aluminium enclosure
- ✓ Diffusion filter and reflector included



available **now**



available **now**



available **now**

INSTANT AIR 1000 PRO WIND MACHINE WITH VARIABLE POWER AND DIRECTIVITY

- ✓ Powerful professional wind machine
- ✓ Max. air flow 56 m³ per minute
- ✓ Ultra-quiet 31 cm fan fan
- ✓ Adjustable in 1% increments from 1 - 100
- ✓ Infinitely adjustable output aperture up to 180°
- ✓ DMX control
- ✓ RF remote control included
- ✓ Floor or truss mounting

INSTANT HAZER 1400 T PRO HAZER WITH MICROPROCESSOR CONTROL

- ✓ Microprocessor controlled 1400 W Hazer
- ✓ Max. output volume 991 m³ per minute
- ✓ Long-lasting evaporation tube made of stainless steel 316
- ✓ Automatic self-cleaning
- ✓ Output and fan individually adjustable in 100 increments
- ✓ 2-channel DMX control and standalone mode
- ✓ Built-in insert for fluid canisters up to 5 L
- ✓ Whisper-quiet operation
- ✓ Ideal for TV, film, theatre, discos and live events
- ✓ Enriches the effect of any light show

INSTANT HAZER 1500 T PRO TOURING HAZER WITH MICROPROCESSOR CONTROL

- ✓ Powerful 1,500 W microprocessor-controlled touring haze machine
- ✓ Rugged road case
- ✓ 1020 m³ output capacity per minute
- ✓ Extended-life stainless steel vapor tube
- ✓ Automatic self-cleaning mechanism
- ✓ Haze emission and fan speed individually adjustable in 100 increments
- ✓ 2-channel DMX control and standalone functionality
- ✓ Integrated fluid canister drawer
- ✓ Whisper-quiet operation
- ✓ Ideal for TV, motion pictures, theaters, discotheques and live events
- ✓ Enhances any light show



available **Q3 2016**



available as **8000 mAh** and **4000 mAh** version

BATPACK RECHARGEABLE 9V DC POWER SUPPLY

- ✓ Rechargeable 9V DC Power Supply
- ✓ Perfect for Palmer Pedalbays
- ✓ Low-profile all-metal enclosure with 12 mounting holes
- ✓ High grade long-life lithium polymer battery
- ✓ 2 isolated and regulated 9V DC outputs
- ✓ Type A USB port for charging smartphones or tablets
- ✓ Short circuit protection
- ✓ 5-segment LED battery status indicator
- ✓ Fully functional while recharging



PRODUCT HIGHLIGHTS

available Q2 2016



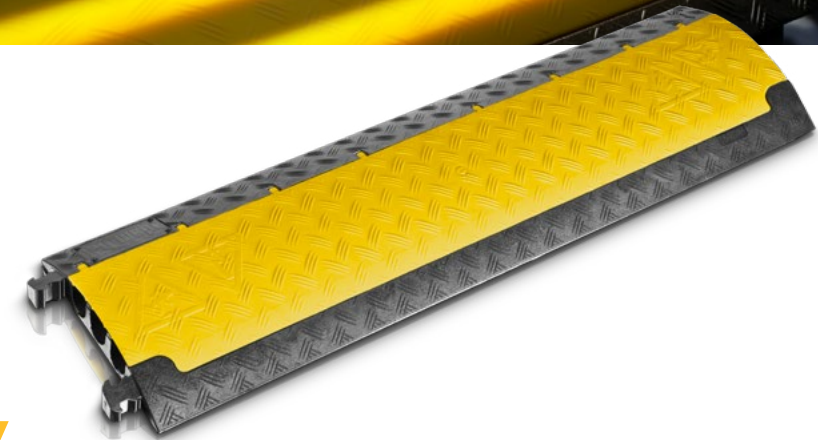
BASS POCKET AMP

MINI AMPLIFIER FOR BASS GUITARS

- ✓ Multi-purpose bass effects pedal and preamp
- ✓ Works with any bass rig, power amp, mixing desk and as headphones amp
- ✓ Pad switch for use with active and passive basses
- ✓ Clean, overdrive and fuzz modes
- ✓ Drive and saturation controls
- ✓ 3-Band EQ with semi-parametric mid control
- ✓ Vintage and modern cabinet simulations
- ✓ Blend control for wet and dry signal mixing
- ✓ 3-pin XLR for balanced DI, pre or post effect switchable
- ✓ Footswitch-assignable thru (tuner) output
- ✓ Insert, stereo line input and ground lift

DEFENDER® PRODUCT HIGHLIGHTS

available Q2 2016



LUX

SEMI TRANSPARENT
LID SERIES

The ultimate in cable protection and trip hazard prevention, our innovative Defender LUX Series feature highly translucent yellow-tinted lids for running LED rope lights along your cables and cords. Developed in conjunction with major venues and event organizers Defender LUX Cable Protectors are the state-of-the-art indoor and outdoor solution to ensure maximum visibility and security in the dark. Defender LED rope lights are also available as dedicated accessories. See our price list for the Defender LUX and rope light range or talk to your Defender representative.



available now

CUSTOM SERVICE

DESIGN YOUR OWN **CABLE PROTECTION SYSTEM**



SPECIAL CONFIGURATIONS

ROBOTIC PLASTIC WELDING

For superior flexibility in designing your cable protection system and perfect integration into your environment Defender provides its own in-house robotic plastic welding service. Need an intersection or T-junction, a special angle or radius curve? We produce one-offs and small quantities of Defender elements made to your requirements. What's more, at Defender engineering and tooling we develop and produce special purpose injection-molded protection solutions like those below. Talk to your Defender representative for more information and minimum orders.



CUSTOM SOLUTION DEVELOPMENT

DEFENDER SUBTERRA

Developed with and produced for Halliburton Oilfield Services, the Subterra is a protection system for underground hydraulic lines. It combines thermoplastic polyurethane and reinforced polyamide materials to withstand earth pressure and truly demonstrates the scope of Defender's purpose design and custom production facilities.



DEFENDER RACE RESULT

Developed with leading race management and timing company race result, these injection molded thermoplastic polyurethane protectors are another Defender Custom product that has been purpose-designed for the company's sports event timing system antennas.



best case scenario.




the adam hall®

FliteCAD®

THE DIGITAL FLIGHTCASE SOLUTION

available summer 2016

- ✓ The ultimate case builder's tool
- ✓ Simple and straightforward user interface
- ✓ Quick start case design guide
- ✓ 2D and 3D blueprint views
- ✓ Selectable workflow: from inside dimensions to outside or vice versa
- ✓ Hardware management with unlimited parts listing
- ✓ Easy client and project management
- ✓ Quotations with a single click, ready to mail or print



available Q3 2016

VARI G SERIES

MULTI INSTRUMENT GUITAR RACKS

Designed for all acoustic, electric and bass guitars, Gravity guitar racks are available in three versions accommodating 3, 5 or 7 instruments. They are made of heavy-duty steel tubing with a black powder coating finish. Holding the necks firmly and securely the adjustable soft touch yokes are padded and detachable. The rails supporting the guitar bodies are covered in specifically formulated foam to prevent dents and scratches. Quick to set up and space saving, the Gravity guitar racks fold up flat for easy transport and storage.

- ✓ Straightforward, rock solid construction
- ✓ Folds up flat for transport and storage
- ✓ Adjustable yokes with rubber padding
- ✓ Foam-covered body supports
- ✓ For all acoustic, electric and bass guitars



available Q3 2016

SOLO G SERIES

A-FRAME GUITAR STANDS

With its A-frame series Gravity introduces three new stands for acoustic and classical guitars, for electric and bass guitars and a universal design that accommodates most body shapes. The A-frame stands are made of heavy-duty steel tubing with black powder coating finish, soft rubber backrest and TPU support arm padding to protect the instrument's finish and nonslip rubber feet. Providing two splay angle options, the tilt back design folds up to compact dimensions nicely for easy portability.

- ✓ Straightforward, rock solid construction
- ✓ Soft rubber backrest and TPU padding
- ✓ Two angles of splay



win big with adam hall!

GRAND PRIZE:
CUSTOM ART EDITION OF
THE NEW **CURV 500**® PORTABLE ARRAY

This year we are giving away **eight exciting prizes**, including an LD Systems **CURV 500**® custom art edition portable array!

To enter our free drawing, just take 5 minutes to fill out our short form and you're all set.



1st PRIZE:
LD SYSTEMS **CURV 500**®
PORTABLE ARRAY
CUSTOM ART EDITION



2nd PRIZE:
CAMEO **AURO**® SPOT
AND CUSTOM-MADE GOBO



3rd PRIZE:
GRAVITY
FIVE-PRIZE BUNDLE



visit win.adamhall.com to win!



ADAM HALL'S WORLD OF SOUND, LIGHT, STAGE AND HARDWARE

MAUI 11 G2
MAUI 28 G2
LD SYSTEMS

FliteCAD DEMO 

FLIGHTCASE HARDWARE 

DEFENDER

U 500 **LD SYSTEMS**

PIXBAR 600 IP65 

INSTANT SERIES 

WELCOME DESK


LD SYSTEMS DSP 44 K

MEETING LOUNGE

REFRESHMENT COUNTER

GRAVITY 

AURO SPOTS 

AURO BEAM 


CURV 500 1AMP
CURV 500 ISUB
LD SYSTEMS

INNOVATION WALK

PERFORMANCE AREA

PROMOTION DESK

 ZENIT Z 120

AURO MATRIX AURO BAR 

BATPACK BASS POCKET AMP 

ADAM HALL GROUP
HALL 3.1, #E60

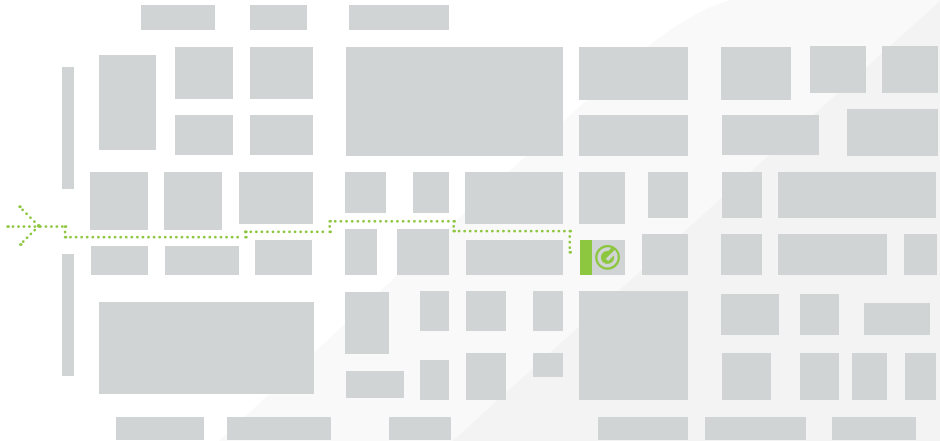


DESIGN
AWARD
2016



reddot award 2016
winner

CATEGORY
MICROPHONE
STANDS



hall 11, #E48



at musikmesse 2016

Gravity, Adam Hall Group's new brand of modern music stands, will have its own booth at the **Musikmesse** in **Hall 11, #E48**, where product experts will explain the special features and innovative elements of the premium brand. Musikmesse takes place from **Thursday, April 7th to Sunday, April 10th**. The **Musikmesse** is open to both trade and private visitors.

Gravity is also the **official stands partner** for the 2016 **Musikmesse** stages, including the **Beck's Open Stage** and **Center Stage** near Halls 10 and 11.



11 available colors – 11 Gravity® Stands to win



With the colorful assortment of the optional **G-Rings**, **Gravity® Stands** are uniquely positioned to offer an interchangeable color-coded labelling and personalization system. The smart G-Ring concept, with 11 attractive colors to choose from, provides a convenient coding system to ensure that you can enjoy a smoother setup/soundcheck, differentiate your equipment, or simply match up with the rest of your own gear to add to the fun.

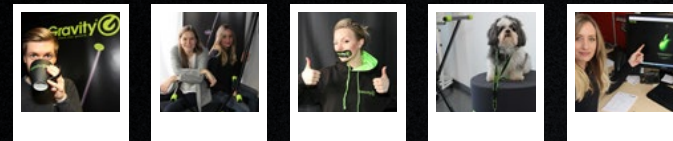
Take this opportunity and **win one of 11 Gravity® Stands**, each with an assortment of colored **G-Rings**.

Here are the conditions to participate:

Take a picture of yourself with a **Gravity® Stand** or any other **Gravity®**-branded item (i.e. a **Gravity®** magazine ad, a **Gravity®** product catalog or flyer, a **Gravity®** Lanyard, etc.).

Please note: to participate in the **Gravity®** contest, the **Gravity®** Logo must be shown clearly somewhere in your photo.

Be sure to include the hashtags **#gravitystands** and **#musikmesse2016** and then **post your photo** on **Facebook** and/or on **Instagram**.



The **Gravity® Stands** contest starts on April 1st and ends on April 10th. The winners will be announced on the **Gravity® Stands Facebook Page** and on **Instagram**.

Good luck!

LD
SYSTEMS®



cameo®



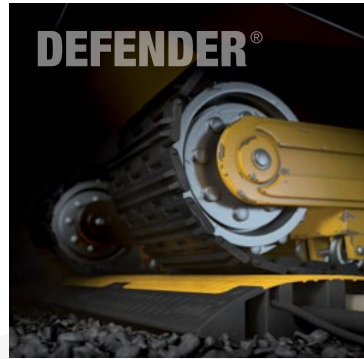
Gravity®



Palmer
Musical Instruments



DEFENDER®



adam hall®
EQUIPMENT **FOR YOUR IDEAS**

www.adamhall.com



www.facebook.com/AdamHallGmbH
<https://www.youtube.com/user/adamhalltv>
blog.adamhall.com